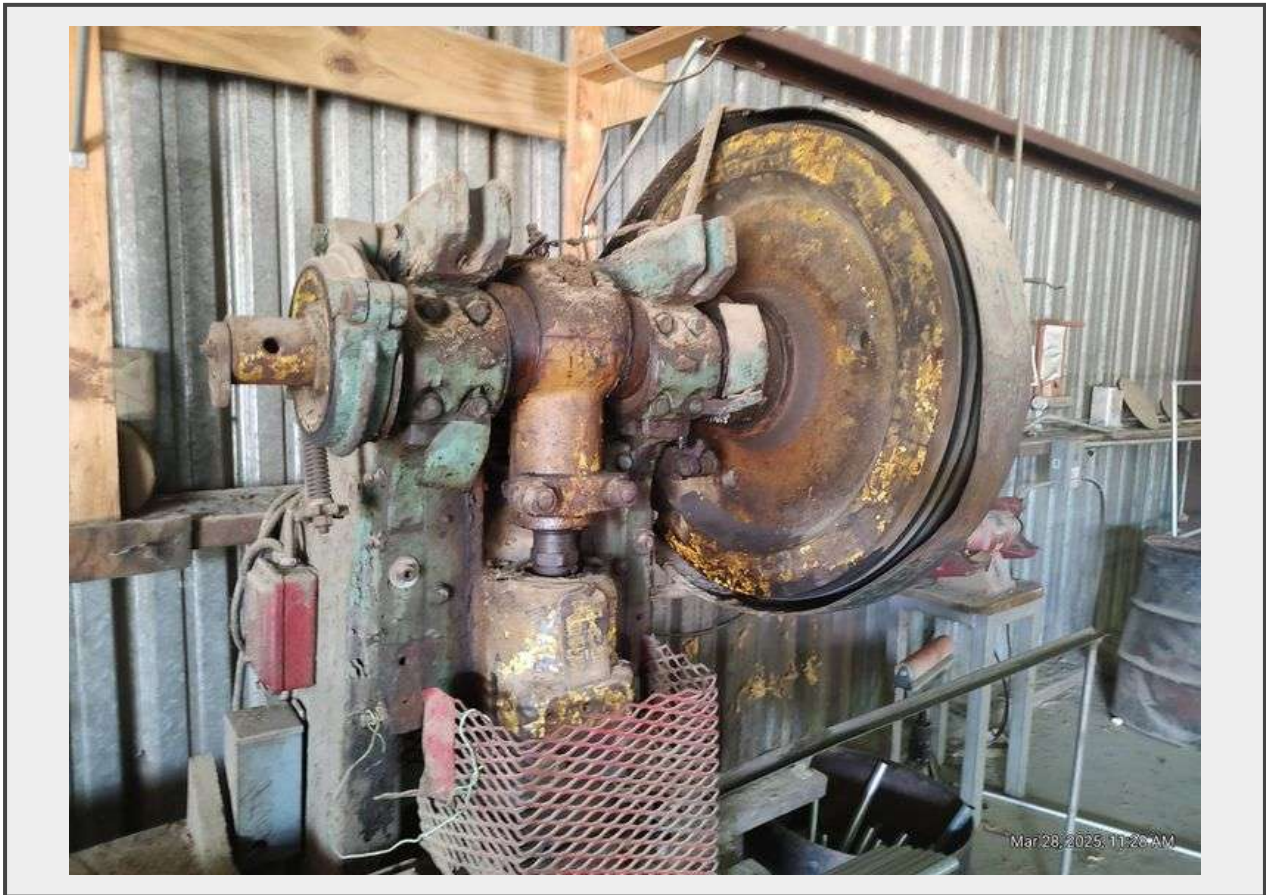


Sale Name: Shop Liquidation - Stillmore, GA

LOT 15 - Industrial Metalworking Flywheel Machine



Description

Industrial flywheel machine constructed of heavy metal materials, featuring a partially painted surface with visible wear resembling prolonged industrial use. Equipped with a safety guard and workbench attachments. Detailed maker identification is partially obscured but present. Suitable for mechanical or restoration purposes. WE WILL NOT HAVE THE MEANS TO LOAD THIS ITEM. IT IS VERY HEAVY. A LATER LOADOUT DATE WILL BE ALLOWED ON THIS ITEM.

Quantity: 1



<https://www.southauction.com/>