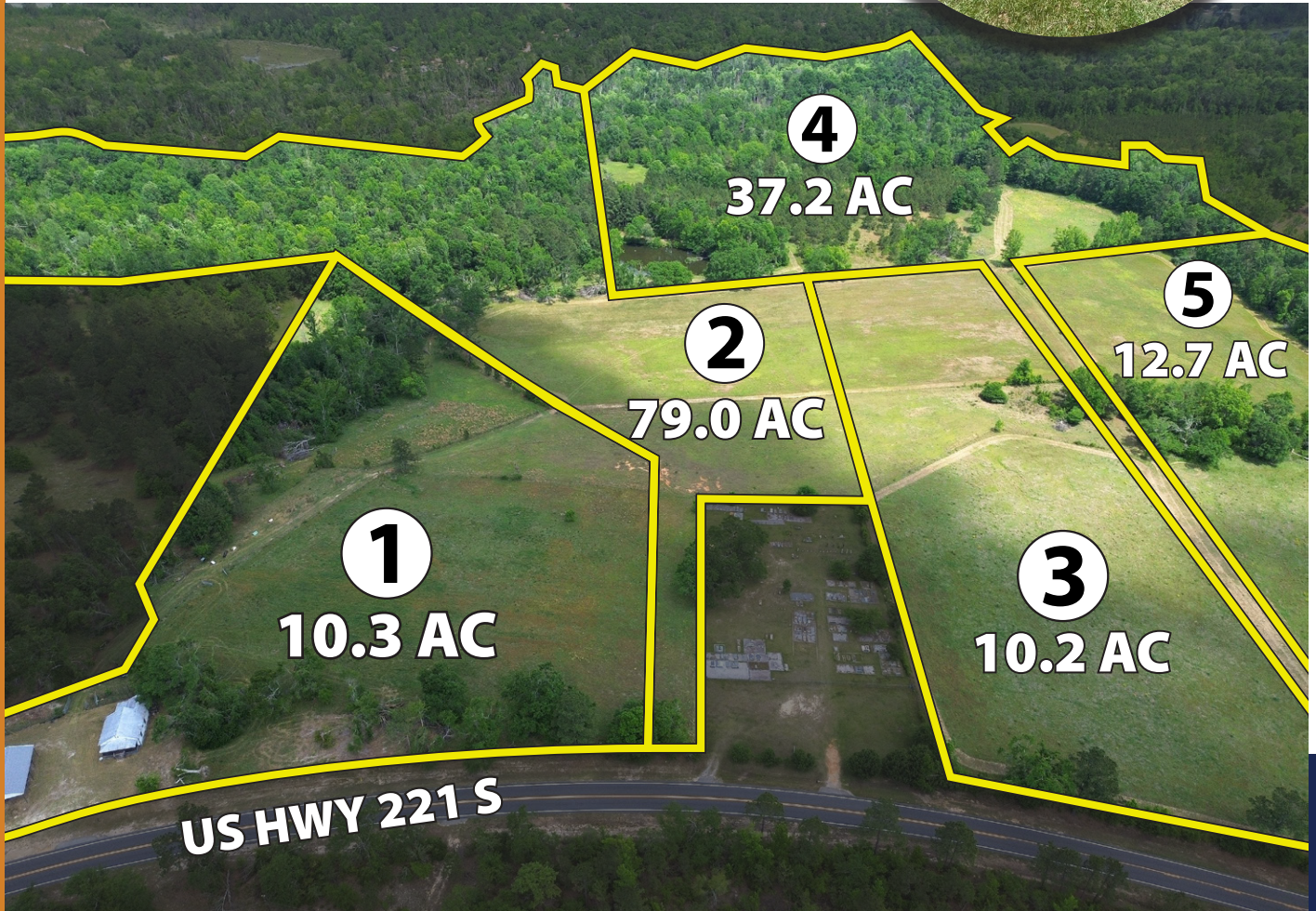


Real Estate
Auction

OLD STORE FARM

149.6± ACRES

1444 US HWY 221, Kite, GA
Johnson Co.



BIDDING ENDS JUNE 11TH AT 3PM



Rusty Lane, Owner

478.455.1861

rusty@southauctiongroup.com

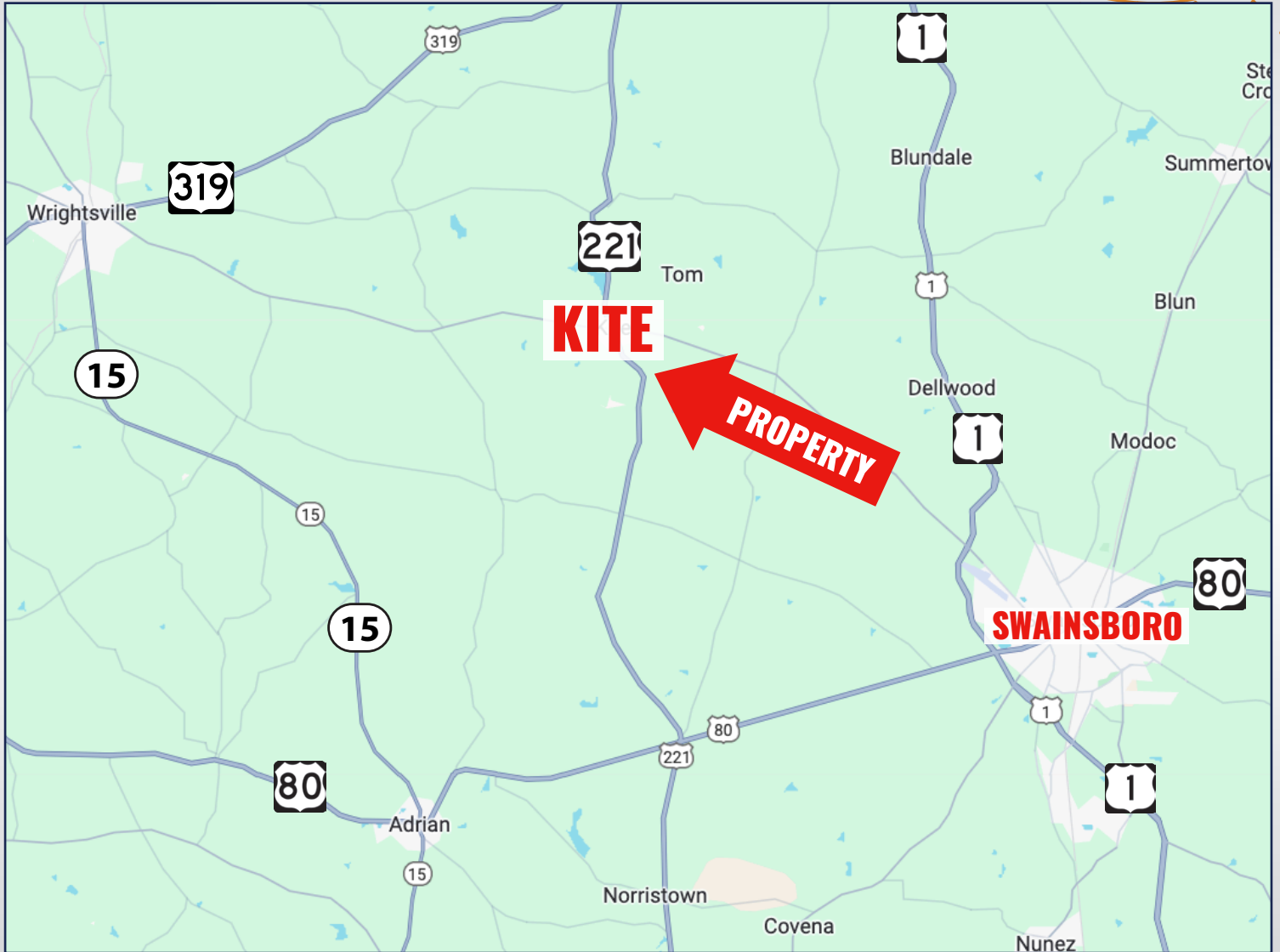


**SOUTH
AUCTION**

SouthAuction.com

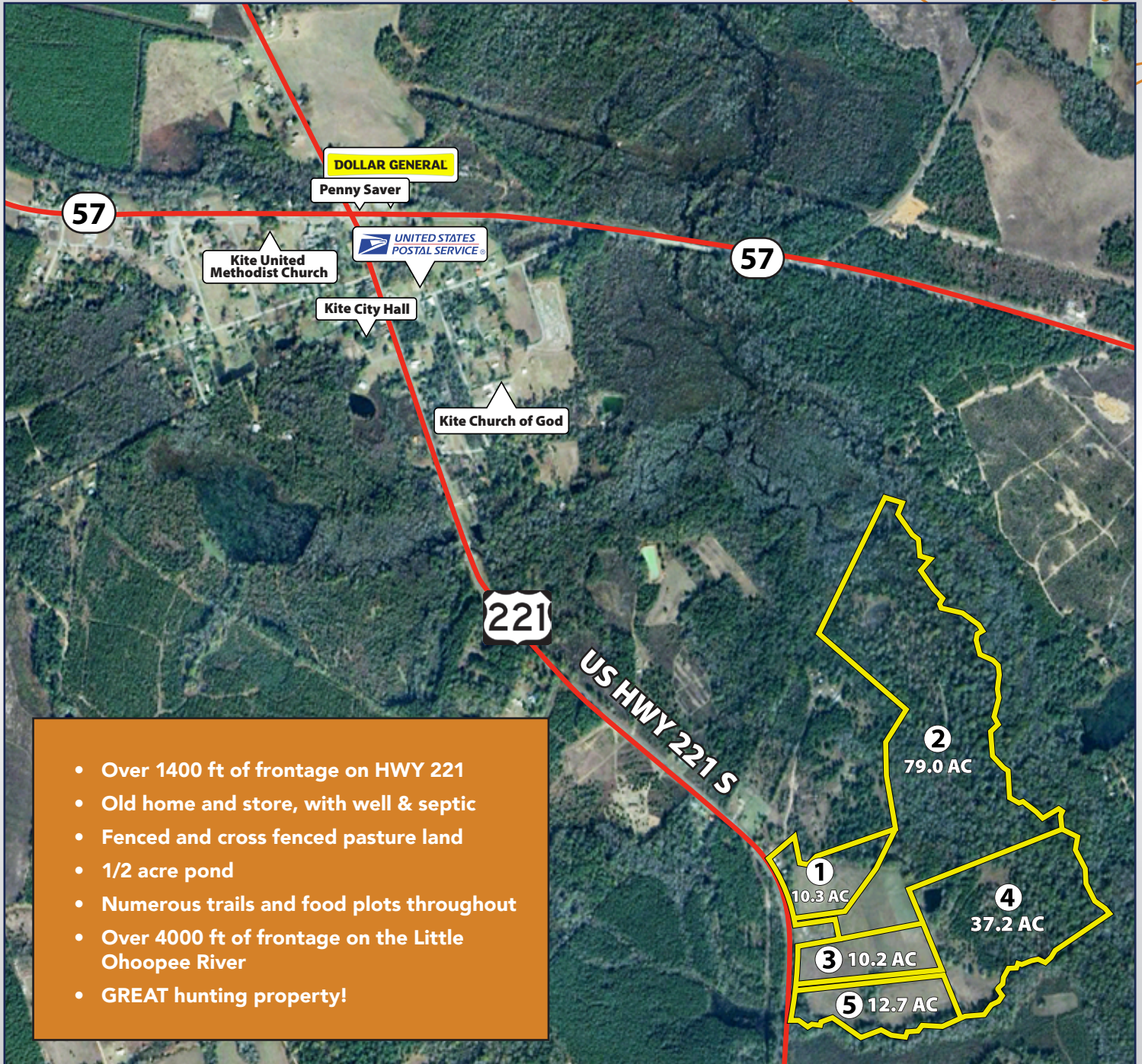


PROPERTY LOCATION



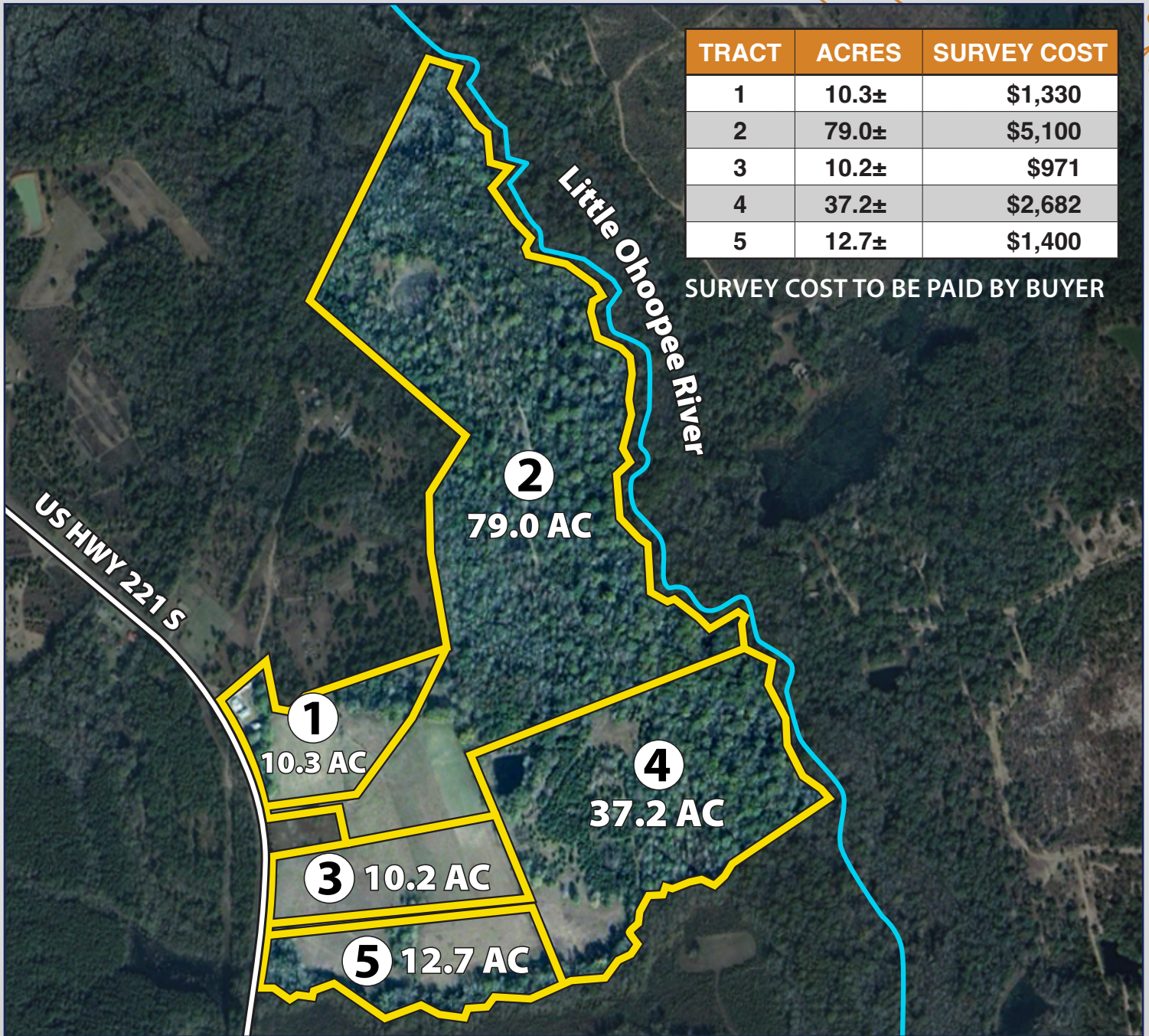


LOCATION MAP





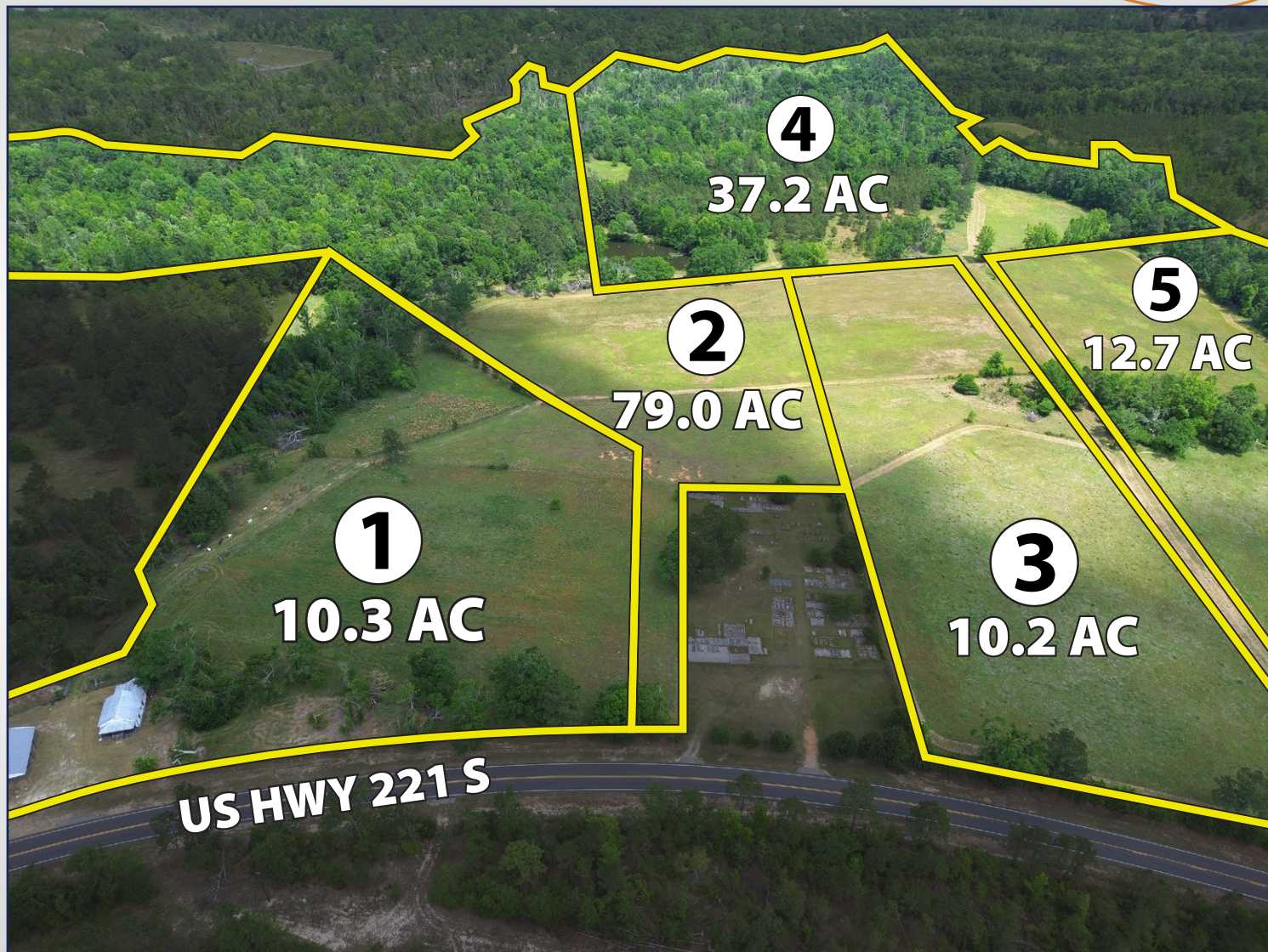
AERIAL MAP



Visit SouthAuction.com for Auction Details & to Place Your Bid.

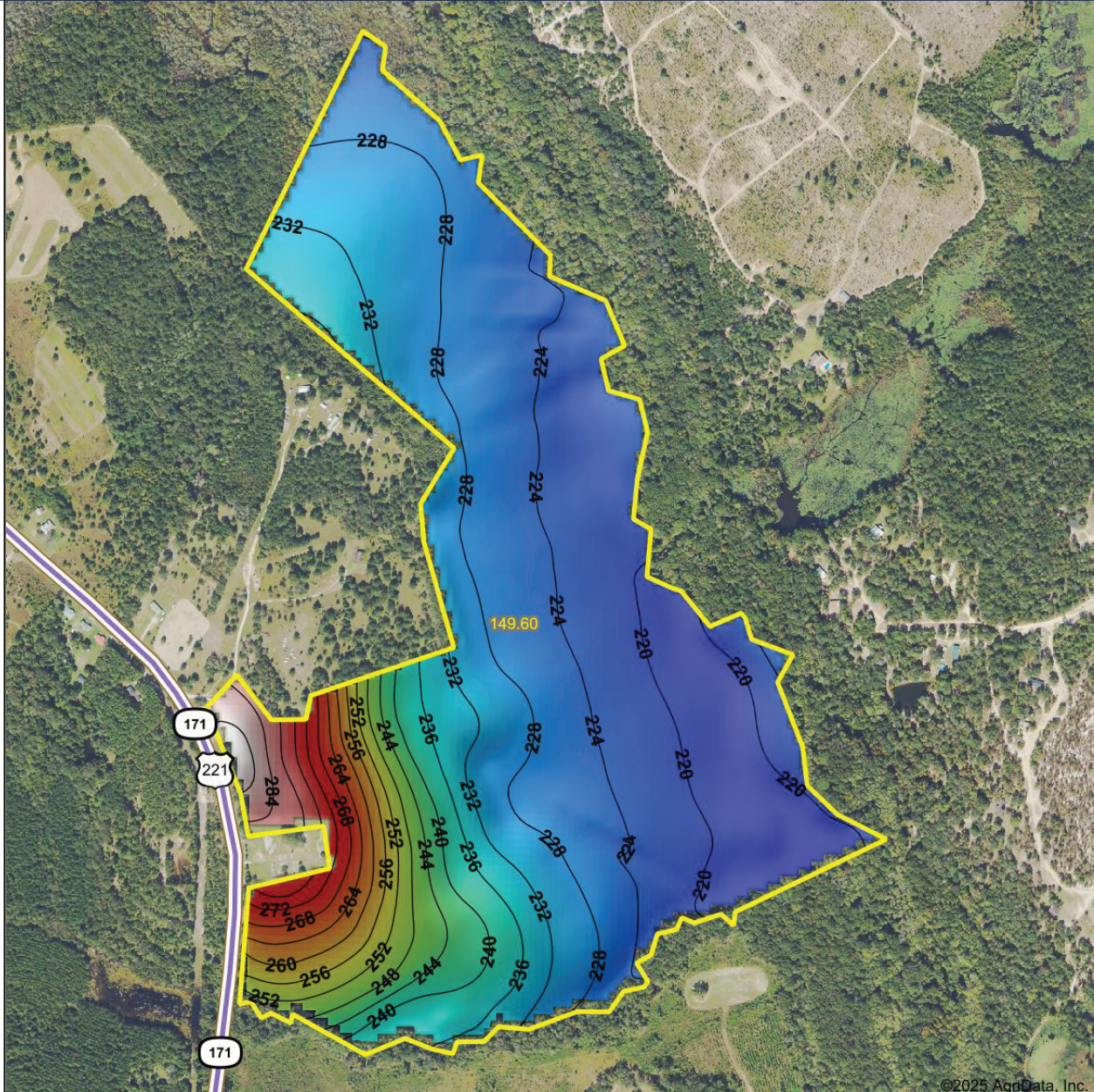


DRONE MAP

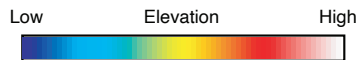




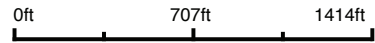
TOPOGRAPHY MAP



©2025 AgriData, Inc.



Source: USGS 10 meter dem
 Interval(ft): 4
 Min: 217.7
 Max: 289.8
 Range: 72.1
 Average: 232.8
 Standard Deviation: 14.99 ft



5/20/2025

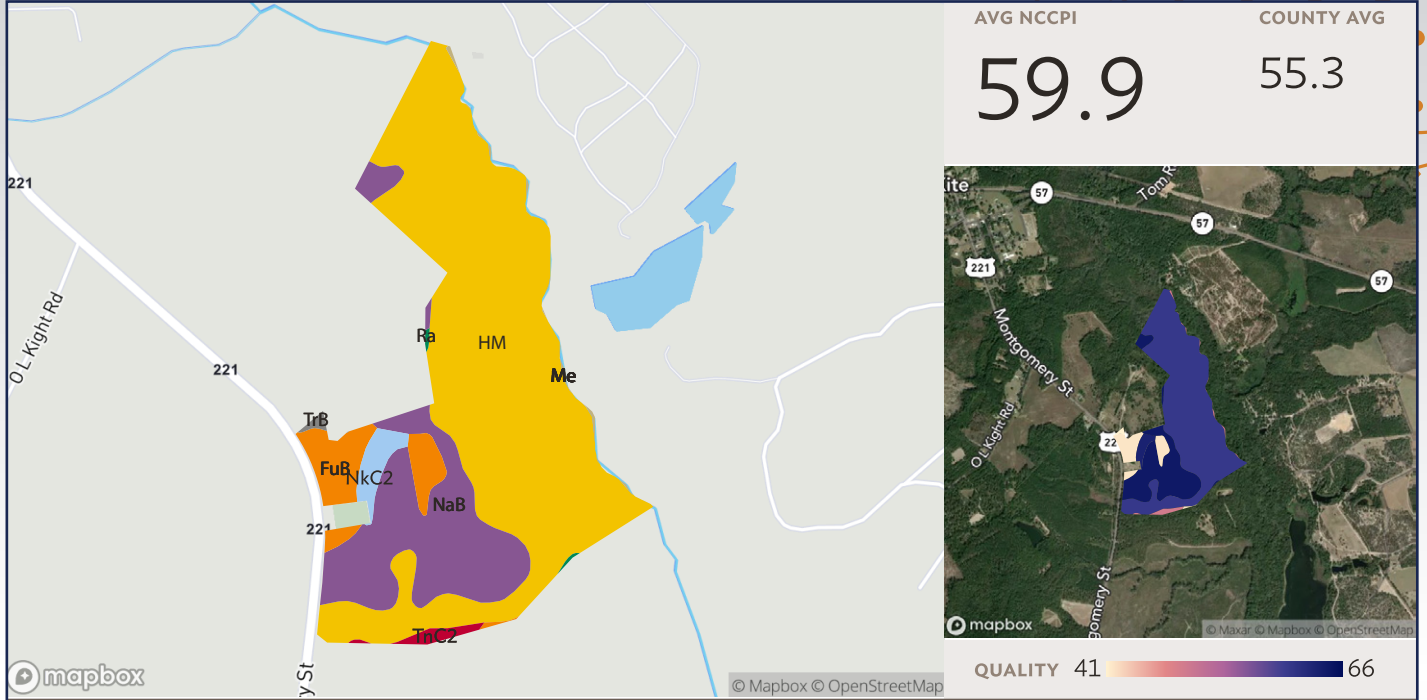
Johnson County
Georgia

Boundary Center: 32° 40' 47.81, -82° 29' 53.17

Maps Provided By:
surety
 CUSTOMIZED ONLINE MAPPING
 © AgriData, Inc. 2023 www.AgriDataInc.com



SOILS MAP



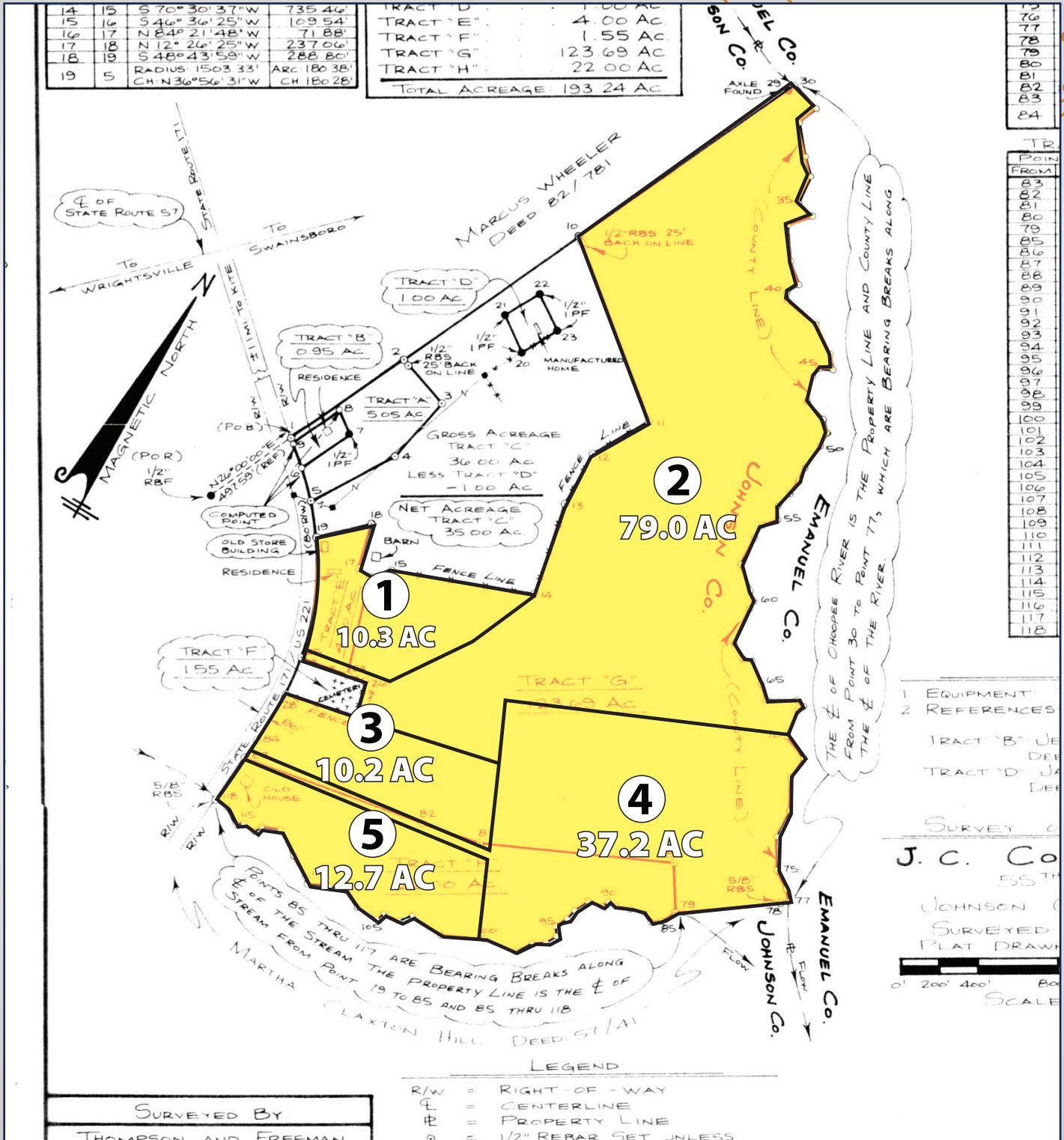
AVG NCCPI **59.9** COUNTY AVG 55.3

All fields
149 ac. Source: NRCS Soil Survey

SOIL CODE	SOIL DESCRIPTION	ACRES	PERCENTAGE OF FIELD	SOIL CLASS	NCCPI
HM	Herod and Muckalee sandy loams, frequently flooded	102.31	68.6%	5	Upgrade
NaB	Nankin loamy sand, 2 to 5 percent slopes	32.35	21.7%	2	Upgrade
FuB	Fuquay loamy sand, 0 to 5 percent slopes	9.14	6.1%	2	Upgrade
NkC2	Nankin sandy loam, 5 to 8 percent slopes, moderately eroded	2.96	2.0%	4	Upgrade
TnC2	Tifton sandy loam, 5 to 8 percent slopes, eroded	1.29	0.9%	3	Upgrade
Me	Meggett loam, frequently flooded	0.47	0.3%	6	Upgrade
TrB	Troup sand, 0 to 6 percent slopes	0.37	0.3%	3	Upgrade
Ra	Rains sandy loam	0.21	0.1%	3	Upgrade
149.10					Upgrade



PLAT MAP





PHOTOS





PHOTOS

