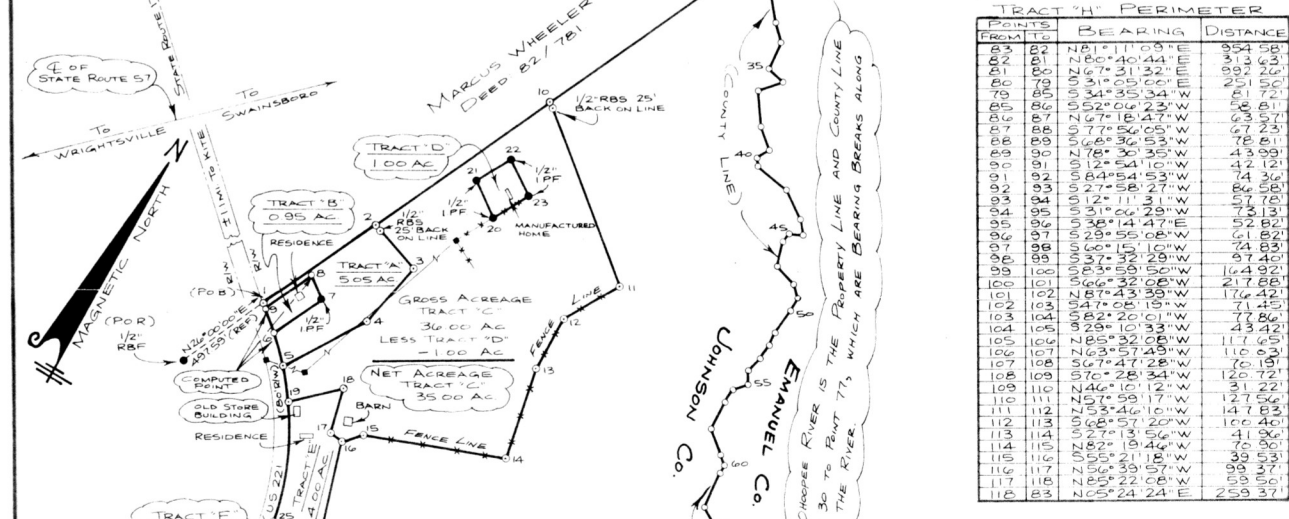


TRACT 'A' PERIMETER				TRACT 'D' PERIMETER				TRACT 'G' PERIMETER				TRACT 'H' PERIMETER CONTINUED			
POINTS FROM TO	BEARING	DISTANCE		POINTS FROM TO	BEARING	DISTANCE		POINTS FROM TO	BEARING	DISTANCE		POINTS FROM TO	BEARING	DISTANCE	
1	2	N26°00'00"E	699.93'	20	21	N54°08'17"W	209.36'	28	27	N79°08'51"E	369.64'	43	44	S46°09'04"E	72.82'
2	3	S69°29'45"E	287.48'	21	22	N28°36'35"E	210.00'	27	26	N10°22'00"W	179.89'	44	45	S67°24'53"W	44.48'
3	4	S16°56'34"W	362.94'	22	23	S64°06'33"E	209.99'	26	24	S8°44'00"W	98.60'	45	46	S12°28'57"W	51.29'
4	5	S33°21'37"W	419.94'	23	20	S28°36'49"W	209.94'	24	24	N15°59'39"W	516.00'	46	47	S16°28'54"E	51.04'
5	6	RADIUS 1503.33'	ARC 179.08'					15	15	N46°36'25"E	109.54'	47	48	S67°29'47"E	123.20'
6	7	CH N43°47'32"W	CH 178.98'					14	13	N70°36'37"E	735.45'	48	49	S44°29'56"W	71.97'
7	8	N26°00'00"E	287.01'					13	12	N10°00'52'18"W	230.63'	49	50	S05°59'32"E	78.63'
8	9	N49°32'00"W	150.00'					12	11	N30°00'56'39"E	333.00'	50	51	S07°07'42"W	139.65'
9	1	RADIUS 1503.33'	ARC 5.87'					11	10	N26°00'00"E	1506.52'	51	52	S00°00'59"7"W	63.59'
		CH N53°01'21"W	CH 5.87'					10	9	N26°00'00"E	1506.52'	52	53	S00°00'59"7"W	63.59'
								9	8	N26°00'00"E	1506.52'	53	54	S15°55'53"W	81.25'
								8	7	N26°00'00"E	1506.52'	54	55	S31°15'46"W	71.49'
								7	6	S42°42'28"E	67.57'	55	56	S42°42'28"E	74.93'
								6	5	S01°15'28"E	145.33'	56	57	S43°58'51"E	146.64'
								5	4	S44°33'03"E	53.78'	57	58	S01°15'28"E	145.33'
								4	3	S43°58'51"E	146.64'	58	59	S43°58'51"E	146.64'
								3	2	S44°33'03"E	53.78'	59	60	S44°33'03"E	53.78'
								2	1	S01°15'28"E	145.33'	60	61	S01°15'28"E	145.33'
								1	0	S01°15'28"E	145.33'	61	62	S01°15'28"E	145.33'
								0	0	S01°15'28"E	145.33'	62	63	S01°15'28"E	145.33'
												63	64	S01°15'28"E	145.33'
												64	65	S01°15'28"E	145.33'
												65	66	S01°15'28"E	145.33'
												66	67	S01°15'28"E	145.33'
												67	68	S01°15'28"E	145.33'
												68	69	S01°15'28"E	145.33'
												69	70	S01°15'28"E	145.33'
												70	71	S01°15'28"E	145.33'
												71	72	S01°15'28"E	145.33'
												72	73	S01°15'28"E	145.33'
												73	74	S01°15'28"E	145.33'
												74	75	S01°15'28"E	145.33'
												75	76	S01°15'28"E	145.33'
												76	77	S01°15'28"E	145.33'
												77	78	S01°15'28"E	145.33'
												78	79	S01°15'28"E	145.33'
												79	80	S01°15'28"E	145.33'
												80	81	S01°15'28"E	145.33'
												81	82	S01°15'28"E	145.33'
												82	83	S01°15'28"E	145.33'
												83	84	S01°15'28"E	145.33'
												84	28	RADIUS 1503.33'	ARC 280.75'
														CH N63°19'11"E	CH 280.75'



TRACT	ACREAGE
TRACT 'A'	5.05 AC
TRACT 'B'	0.95 AC
TRACT 'C' (NET)	35.00 AC
TRACT 'D'	1.00 AC
TRACT 'E'	4.00 AC
TRACT 'F'	1.55 AC
TRACT 'G'	123.69 AC
TRACT 'H'	22.00 AC
TOTAL ACREAGE	193.24 AC

NOTES

- EQUIPMENT: TOPCON GTS 3B EDM
- REFERENCES: DEED 45/201 PLAT: PB 4/97

TRACT 'B' JERRY A & JEWEL S COOPER DEED 77/12 PLAT PB 5/229
 TRACT 'D' JACKY COOPER DEED 145/290 PLAT PB 14/17

SURVEY OF PROPERTY FOR
J. C. COOPER ESTATE
 55TH GMD
 JOHNSON COUNTY, GEORGIA
 SURVEYED JULY 8, 2000
 PLAT DRAWN AUGUST 14, 2000

SCALE 1" = 400'

LEGEND

- R/W = RIGHT-OF-WAY
- CL = CENTERLINE
- PL = PROPERTY LINE
- o = 1/2" REBAR SET UNLESS OTHERWISE NOTED
- RBS = REBAR SET
- IPF = IRON PIPE FOUND
- RFB = REBAR FOUND
- (REF) = REFERENCE LINE
- (P/B) = POINT OF BEGINNING
- (P/R) = POINT OF REFERENCE

SURVEYED BY
 THOMPSON AND FREEMAN
 LAND SURVEYORS, INC.
 142 ALLENWOOD RD SW
 MILLEDGEVILLE, GA 31061
 PHONE: 912-452-1252
 GA RLS No. 1759
 FILE No. 34E

EDWIN L. THOMPSON
 REGISTERED LAND SURVEYOR
 No. 1759
 8/17/2000

THE FIELD DATA UPON WHICH THIS MAP OR PLAT IS BASED HAS A CLOSURE PRECISION OF ONE FOOT IN 250,000 FEET ANGLE MEASUREMENTS OF 5 SECONDS PER ANGLE POINT AND HAS BEEN ADJUSTED USING LEAST SQUARES. THE MAP OR PLAT HAS BEEN CALCULATED FOR CLOSURE AND IS FOUND TO BE ACCURATE WITHIN ONE FOOT IN 250,000 FEET.

Revised January 3, 2001 Robin Wall Esp. Clerk